



### 311SM1-T



Actual product appearance may vary.

**SM Series Subminiature Basic Switch, Single Pole Double Throw (SPDT), 250 Vac, 5 A, Straight Lever Actuator, Solder Termination**

#### Features

- Long operating life
- Elongated mounting hole for easier, more accurate mounting
- Choice of actuation (plunger, as well as a variety of integral and auxiliary actuators)
- Choice of electrical termination (solder, quick connect, PCB)
- Choice of operating characteristics (sensitive differential travel as low as 0,0254 mm [0.001 in] maximum, low operating force to 0,56 N [2.0 oz] maximum)
- Optional series constructions available (gold contacts for low energy switching, bifurcated gold contacts for maximum reliability, power load switching capability to 11 A)
- MIL-PFR-8805 qualified listings available

#### Potential Applications

- Aerospace
- Instrumentation
- Appliances
- Vending machines
- Timing devices
- Office equipment
- Computer/business equipment
- Test instruments
- Medical/dental equipment
- Communications equipment
- HVAC equipment
- Manually operated devices
- Valves

#### Description

MICRO SWITCH™ SM Series subminiature basic switches are used for simple or precision on/off application needs. The MICRO SWITCH™ SM Series switches are slightly larger than the MICRO SWITCH™ SX Series switches. These switches combine small size and light weight with ample electrical capacity, precision operation and long life.

#### Product Specifications

Switch Type	MICRO SWITCH™ Subminiature 12,7 mm H x 6,35 mm W x 20,3 mm L [0.5 in H x 0.25 in W x 0.8 in L]
Sealed	No
Ampere Rating	5 A
Circuitry	Single Pole Double Throw (SPDT)
Actuator	Straight Lever
Termination	Solder

Operating Temperature Range	-55 °C to 125 °C [-67 °F to 257 °F]
Voltage	250 Vac
Approvals	CE,CSA,UL,ENEC
Actuator Length	7,24 mm [0.285 in]
Contact Type	Silver
Operating Force (O.F.)	0,39 N [1.4 oz] max.
Release Force (R.F.)	0,07 N [0.25 oz] max.
Pretravel (P.T.)	2,16 mm [0.085 in] max.
Overtravel (O.T.)	0,51 mm [0.020 in] min.
Differential Travel (D.T.)	0,48 mm [0.019 in] max.
Operating Position (O.P.)	8,64 mm ± 1,5 mm [0.340 in ± 0.060 in]
Housing Material	General Purpose Phenolic
High Temperature	204 °C [400 °F]
CE mark	61058-1
UL File #	E12252
CSA File #	LR41372
Agency Approvals and Standards	1054
Mounting Centers	9,65 mm [0.38 in]
Maximum Tightening Torque	0,26 N m [2.3 in lb]
Weight	2,72 g [0.006 lb]
Package Height	12,4 mm [0.49 in]
Package Width	6,35 mm [0.25 in]
Package Length	19,8 mm [0.78 in]
Recommended For	7,24 mm [0.285 in] straight lever
Availability	Global
UNSPSC Code	30211905
UNSPSC Commodity	30211905 Snap switches
Series Name	SM

---

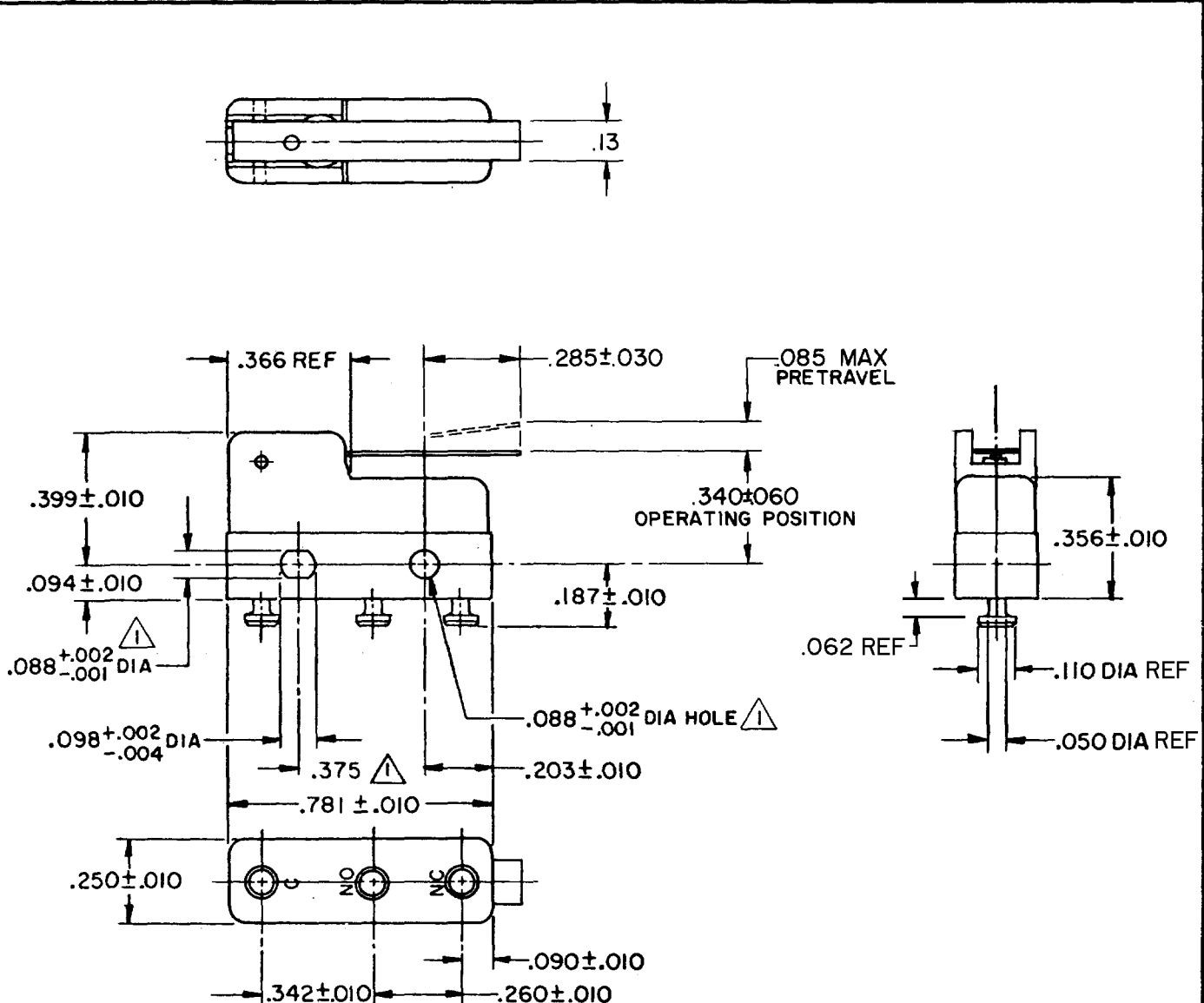
# MICRO SWITCH

FREERPORT ILLINOIS, U.S.A  
A DIVISION OF HONEYWELL  
FED. CODE. CODE 91929

# SWITCH-BASIC

CATALOG LISTING  
**311SM1-T**

DRAWING NUMBER: **311SM1-T**  
 PAGE 1 OF 1  
 RELEASE NO. SR11750 REPLACES  
 ISSUE: **M**  
 CHECK: 4  
 REVISIONS:  
 A CO-31079 SRH SEP 72  
 B CO-77768 S A D 12 JUL 94  
 C CO-95172 J J A 21 JUNE 99  
 CHECK PRW: 29 SEP 72  
 CHECK LBD: 29 SEP 72  
 DRAWN: SRH 27 SEP 72  
 FORMTEK FO-52848



NOTE -  
 1- MOUNTING HOLES WILL ACCEPT PINS OR SCREWS OF .087 MAX DIA ON .375 ± .002 CENTERS  
 2- SWITCH WILL WITHSTAND TEMPERATURE OF 250°F  
 3- TERMINALS ARE PLATED FOR SOLDERING

THIS DRAWING COVERS A PROPRIETARY ITEM AND IS THE PROPERTY OF MICRO SWITCH, A DIVISION OF HONEYWELL. THIS DRAWING IS NOT TO BE COPIED OR USED WITHOUT THE APPROVAL OF MICRO SWITCH.

CHARACTERISTICS	ELECTRICAL DATA	SCALE 2 TO 1
OPERATING FORCE ----- 40 GRAM MAX	CONTACT ARRANGEMENT S P D T	DO NOT SCALE PRINT
RELEASE FORCE ----- 7 GRAM MIN	30 VOLTS DC RATING	UNLESS OTHERWISE NOTED
DIFFERENTIAL TRAVEL ----- .019 MAX	INDUCTIVE ----- SEA LEVEL --- 3 AMP	DIMENSIONS ARE IN INCHES
OVERTRAVEL ----- .020 MIN	50,000 FT --- 2.5 AMP	<b>TOLERANCES ARE</b>
	RESISTIVE ----- SEA LEVEL --- 5 AMP	ONE PLACE (.0) ± .030
	50,000 FT --- 5 AMP	TWO PLACE (.00) ± .015
	MAXIMUM INRUSH ----- 24 AMP	THREE PLACE (.000) ± .005
	L4 5A 250 VAC ~	ANGLES ±
		WEIGHT .006 LB MAX